

RIVA DOMINO 88 ASKING PRICE M € 4.300.000

Builder: Riva
Flag of the boat: Italy

Use
Gen. right: 1.243.7
Gen. left: 1,151.7
Mot. right: 216one Mot. left: 455

Dimensions
L.F.T. Overall length: 26.84 m
Width: 1.82 m
Minimum draft: 1.82 m
Maximum draft: 6.29 m
Net weight: 75000 kgs

Engines
Total Power: 5276 HP

Motor 1:
Engine Brand: MTU
Engine Model: 16V 2000 M94
Engine type: Inboard-EB
Engine / Fuel: Diesel
Propulsion type: V Drive
Engine Power: 2638 HP
Motor 2:
Engine Brand: MTU
Engine Model: 16V 2000 M94
Engine type: Inboard-EB
Engine / Fuel: Diesel
Propulsion type: V Drive
Engine Power: 2638 HP

Cruising speed: 34 knots
Maximum speed: 38 knots

Interior
Number of cabins: 6
Number of toilets: 5
Number of bathrooms: 5

CONFIGURED ACCESSORIES

1. Custom color for hull aft platform
2. Custom color for superstructure
3. MTU 2.638 HP engines - Diff. From STD
4. 40 "TV Master Cabin - Diff. From STD
5. Monitor 17 "on the dashboard - Diff. From STD
6. Kohler generator set 20 kW Diff. 5 kW auxiliary
7. Automatic battery charger for generators
8. Mini fridge in the owner's cabin
9. 2 white underwater lights on the transom
10. N.2 Lights in the rollbar for the stern area lighting
11. Tender Williams 385 turbo jet (fixing included)
12. 40 HP hydraulic stern thruster
13. Additional helm station (fore and aft installed)
14. Mosquito nets on porthole
15. Spar SAT setup
16. Air compressor
17. Echo transducer moved to stern
18. Crew cabin: custom layout
19. Additional mirror
20. Up & Down table in the crew dinette
21. Steel anchor - Diff. From STD
22. Predisposition for an additional desalinator
23. Anchor chain 110 m. (14 mm.) - Diff. From STD
24. Bimini cockpit with carbon poles
25. TV 22 "in the crew dinette including CD / DVD / MP3
26. Ready for printer / fax
27. Navnet 3D: Additional "large" map
28. 2 x Seakeeper







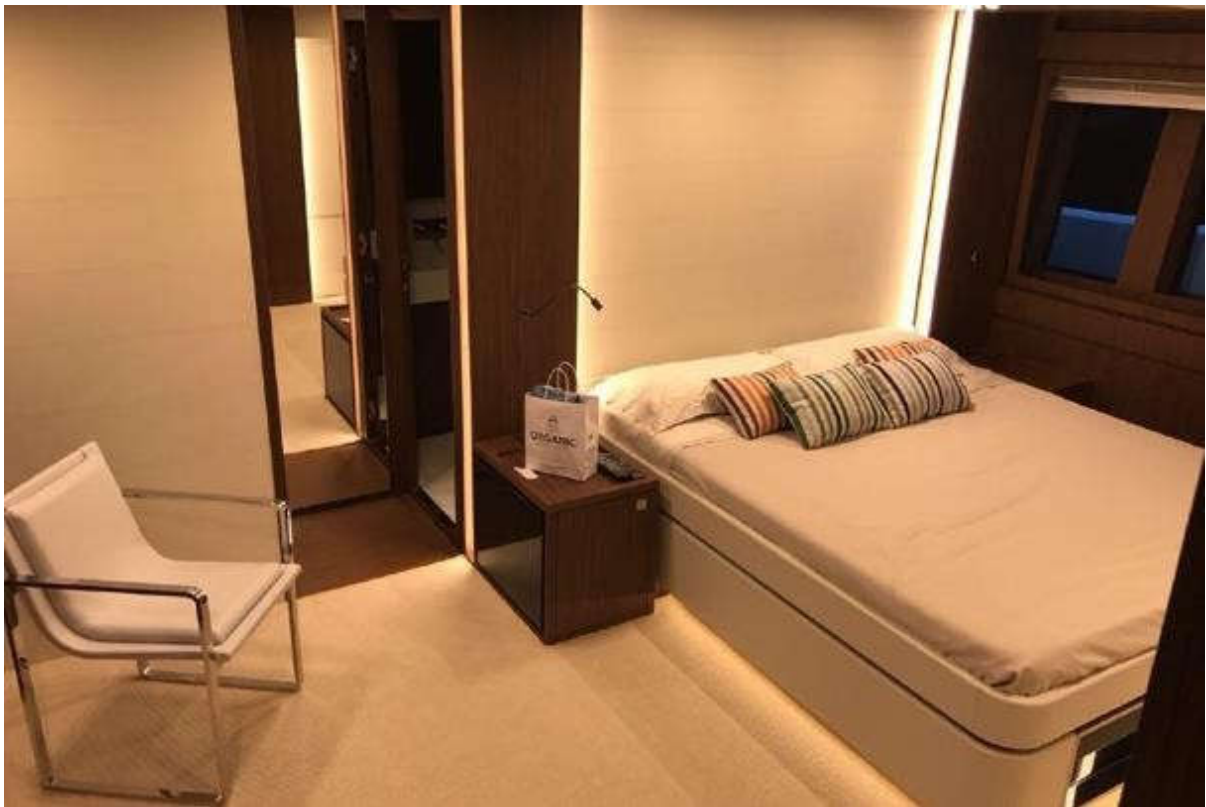


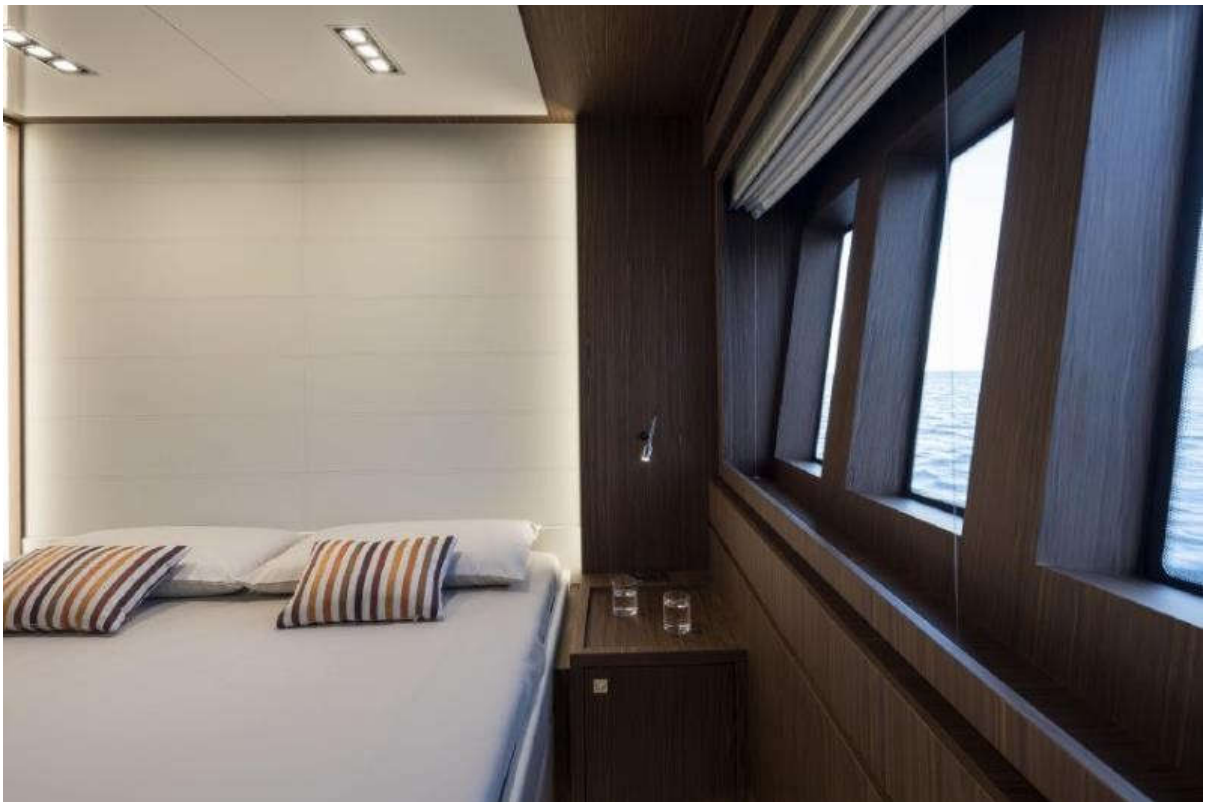


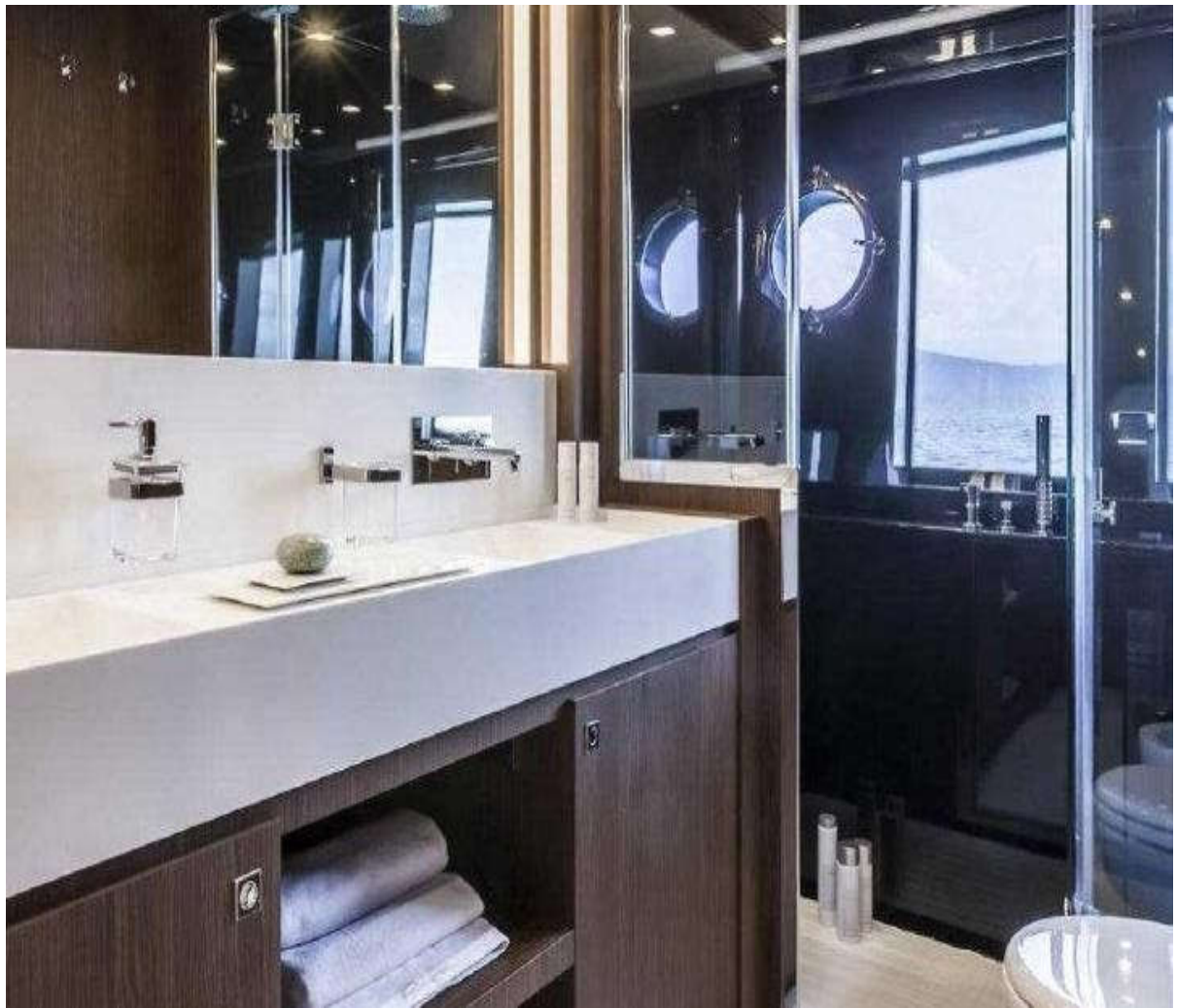
























GENERAL ARRANGEMENT



SUMMARY

Sleek, super yacht, the Riva 88 Domino Super N is bound to appeal equally to those looking for a leisurely cruise as to those looking for a high-performance yacht. Boasting an overall length of 26.84 meters and a beam of 6.29 meters it is the result of the cooperation between Officina Italiana Design - the design firm led by Mauro Micheli and Sergio Beretta that pencils the entire Riva range - and Ferretti Group's Engineering Department.

This yacht immediately strikes the eye for its slender, streamlined profile, which is further highlighted by the colour of the hull, a dark grey that has been named 'London Grey'. The same innovative colour shade can also be found in some deck details and harmoniously contrasts the light grey (Moon Grey) of the superstructure.

KEY FEATURES

- Tender Williams 385 turbo jet (fixing included)
 - Bimini cockpit with carbon poles
 - 2 x Seakeeper
 - Stern thruster hydraulic (power 40 HP)
 - Full beam master suite
 - The great tranquillity on board
 - Master bathroom has a wonderful sea view
 - The TV, concealing the helm, electrically rotates towards the passengers
-